

ANP32E Antibody (N-term)
Purified Rabbit Polyclonal Antibody (Pab)
Catalog # AP21521a**Specification**

ANP32E Antibody (N-term) - Product Information

Application	WB,E
Primary Accession	Q9BTT0
Reactivity	Human
Host	Rabbit
Clonality	polyclonal
Isotype	Rabbit IgG
Calculated MW	30692

ANP32E Antibody (N-term) - Additional Information**Gene ID** 81611**Other Names**

Acidic leucine-rich nuclear phosphoprotein 32 family member E, LANP-like protein, LANP-L, ANP32E

Target/Specificity

This ANP32E antibody is generated from a rabbit immunized with a KLH conjugated synthetic peptide between 31-64 amino acids from the N-terminal region of human ANP32E.

Dilution

WB~~1:2000

E~~Use at an assay dependent concentration.

Format

Purified polyclonal antibody supplied in PBS with 0.09% (W/V) sodium azide. This antibody is purified through a protein A column, followed by peptide affinity purification.

Storage

Maintain refrigerated at 2-8°C for up to 2 weeks. For long term storage store at -20°C in small aliquots to prevent freeze-thaw cycles.

Precautions

ANP32E Antibody (N-term) is for research use only and not for use in diagnostic or therapeutic procedures.

ANP32E Antibody (N-term) - Protein Information**Name** ANP32E

Function Histone chaperone that specifically mediates the genome-wide removal of histone H2A.Z/H2AZ1 from the nucleosome: removes H2A.Z/H2AZ1 from its normal sites of deposition, especially from enhancer and insulator regions. Not involved in deposition of H2A.Z/H2AZ1 in the

nucleosome. May stabilize the evicted H2A.Z/H2AFZ1-H2B dimer, thus shifting the equilibrium towards dissociation and the off-chromatin state (PubMed:[24463511](#)). Inhibits activity of protein phosphatase 2A (PP2A). Does not inhibit protein phosphatase 1. May play a role in cerebellar development and synaptogenesis.

Cellular Location

Cytoplasm. Nucleus.

Tissue Location

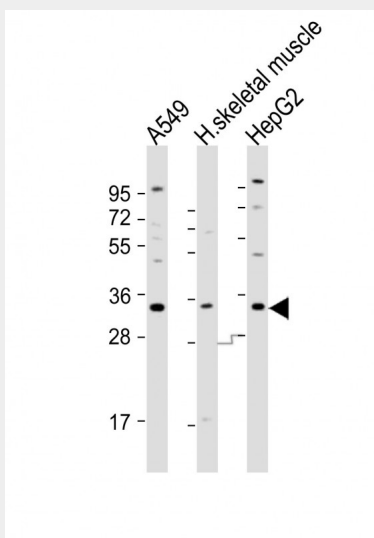
Expressed in peripheral blood leukocytes, colon, small intestine, prostate, thymus, spleen, skeletal muscle, liver and kidney.

ANP32E Antibody (N-term) - Protocols

Provided below are standard protocols that you may find useful for product applications.

- [Western Blot](#)
- [Blocking Peptides](#)
- [Dot Blot](#)
- [Immunohistochemistry](#)
- [Immunofluorescence](#)
- [Immunoprecipitation](#)
- [Flow Cytometry](#)
- [Cell Culture](#)

ANP32E Antibody (N-term) - Images



All lanes : Anti-ANP32E Antibody (N-term) at 1:2000 dilution Lane 1: A549 whole cell lysates Lane 2: human skeletal muscle lysates Lane 3: HepG2 whole cell lysates Lysates/proteins at 20 µg per lane. Secondary Goat Anti-Rabbit IgG, (H+L), Peroxidase conjugated at 1/10000 dilution Predicted band size : 31 kDa Blocking/Dilution buffer: 5% NFDM/TBST.

ANP32E Antibody (N-term) - Background

Histone chaperone that specifically mediates the genome- wide removal of histone H2A.Z/H2AFZ from the nucleosome: removes H2A.Z/H2AFZ from its normal sites of deposition, especially from enhancer and insulator regions. Not involved in deposition of H2A.Z/H2AFZ in the nucleosome. May

stabilize the evicted H2A.Z/H2AFZ-H2B dimer, thus shifting the equilibrium towards dissociation and the off-chromatin state (PubMed:24463511). Inhibits activity of protein phosphatase 2A (PP2A). Does not inhibit protein phosphatase 1. May play a role in cerebellar development and synaptogenesis.

ANP32E Antibody (N-term) - References

Jiang M.,et al.Cytogenet. Genome Res. 97:68-71(2002).
Ota T.,et al.Nat. Genet. 36:40-45(2004).
Bechtel S.,et al.BMC Genomics 8:399-399(2007).
Gregory S.G.,et al.Nature 441:315-321(2006).
Mural R.J.,et al.Submitted (SEP-2005) to the EMBL/GenBank/DDBJ databases.